

An aerial photograph of a lake community under development. In the foreground, a large, dark blue lake is visible, with a white dock and a small building on the right side. The middle ground shows a large, cleared area of land with a winding road and several small buildings. The background is a dense forest of green trees. A black, scalloped-edged banner is overlaid at the top of the image, containing the text 'Hidden Hills' in a white, cursive font.

Hidden Hills

A PREMIERE SMITH LAKE COMMUNITY
Lots & Plans

EST. 2022

BREMEN, ALABAMA



SITE PLAN

A PLANNED COMMUNITY ON SMITH LAKE'S
RYAN CREEK WITH UNPRECEDENTED
VIEWS.

LOTS ARE AVAILABLE FOR PURCHASE
WITH PREDEFINED HOME PLANS BUILT BY
LEGACY LAKE HOMES OR BY A BUILDER &
PLAN OF YOUR CHOICE.



LOT PRICING



HOME SITE	LOT TYPE	LOT PREMIUM
1	Waterfront & Community Slip	\$200,000
2	Waterfront & Community Slip	\$200,000
3	Waterfront & Community Slip	\$200,000
4	Waterfront	\$249,900
5	Waterfront with Hemmingway plan	\$979,900
6	Waterfront	\$200,000
7	Waterfront	\$165,000
8	Waterfront	\$165,000
9	Waterfront	\$165,000
10	Waterfront	\$165,000
11	Waterfront	\$165,000
12	Waterfront	\$165,000
13	Waterfront	\$165,000
14	Waterfront	\$165,000
15	Waterfront	\$165,000
16	Waterfront	\$165,000
17	Waterfront	\$165,000
18	Waterfront	\$229,900
19	Waterfront	\$229,900

HOME SITE	LOT TYPE	LOT PREMIUM
20	Waterfront	\$249,900
21	Water Views	\$119,900
22	Waterfront	\$239,000
23	Water Views	\$119,900
24	Water Views	\$119,900
25	Waterfront	\$239,900
26	Water Views	\$119,900
27	Waterfront	\$165,000
28	Waterfront	\$165,000
29	Water Views	\$119,900
30	Water Views	\$119,900
31	Water Views	\$119,900
32	Water Views	\$119,900
33	Water Views	\$119,900
34	Water Views	\$119,900
35	Water Views	\$119,900
36	Water Views	\$119,900
37	Water Views	\$119,900
38	Water Views	\$119,900

- Lots A, B, C & D are satellite lots and are \$99K.
- Off-water lots have the option to purchase community slips for \$20K or use available ones as first come first serve.

THE CHALET



4 BEDROOM/2 BATH

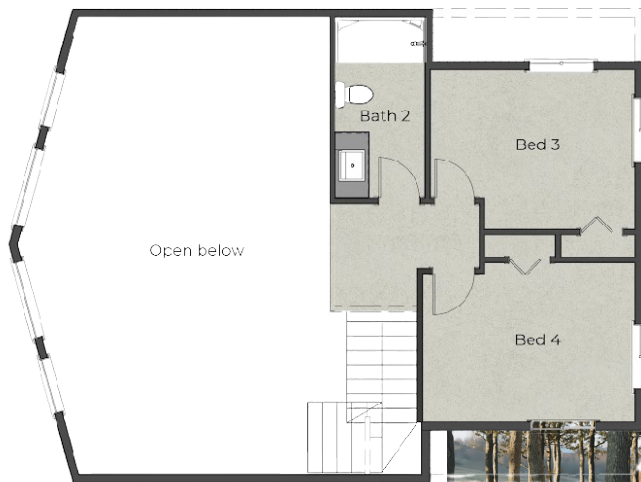
BASEMENT OPTION
SQFT: 2126



Rear Exterior Elevation



Main Level Floor Plan



Second Level Floor Plan



Lakefront Exterior Elevation



This plan also features an additional slab foundation option that features a 3 bedroom/2 bath option that is 1518 square-feet.



COOPER COTTAGE



3 BEDROOM/3 BATH

WITH 2 FLEX AREAS

BASEMENT OPTION

SQFT: 2126

Rear
Exterior Elevation



Main Level Floor Plan



Lakefront Exterior Elevation



Basement Level Floor Plan



The plan also comes in a slab option and features 3 beds and 3 baths plus an additional flex area. It is 2126 square-feet.



MAGNOLIA MANOR



3 BEDROOM/2 FULL/2 HALF BATH

BASEMENT OPTION
SQFT: 2126



Lakefront Exterior Elevation



Rear Elevation



Basement Level Floor Plan



Main Level Floor Plan

The plan has 2 additional options:

1. Slab option with 4 beds and 3 full and 1 half bath option. It is 2126 square-feet.
2. Basement option with 4 beds and 2 full bath and 2 half bath option. It is 2126 square-feet.





ADDISON COTTAGE

3 BEDROOM/2 FULL/1 HALF BATH

BASEMENT OPTION
SQFT: 2264



Rear
Exterior Elevation



Main Level Floor Plan



Basement Floor Plan



Lakefront Exterior Elevation



The plan also features an additional basement option with 4 bedrooms and 2 full and 1 half baths. It is 2264 square-feet.





THE HEMINGWAY

3 BEDROOM/2 FULL/2 HALF BATH

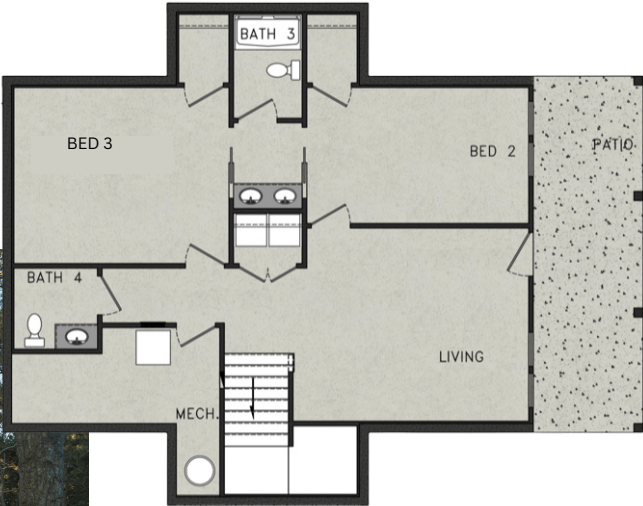
BASEMENT OPTION
SQFT: 2324



Lakefront Exterior Elevation



Main Level Floor Plan



Basement Level Floor Plan



Rear Exterior Elevation

The plan also features an additional basement option with 4 bedrooms and 3 full/1 half baths. It is 2324 square-feet.



KASSIE COTTAGE



4 BEDROOM/3 FULL/2 HALF BATH

WITH STORAGE & FLEX ROOM
BASEMENT OPTION
SQFT: 2726



Lakefront Exterior Elevation



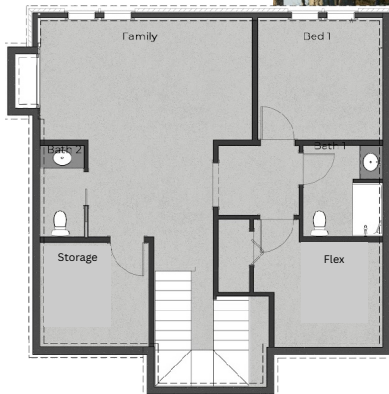
Main Level Floor Plan



Exterior Elevation



Second Level Floor Plan



Basement Level Floor Plan



The plan also features an additional slab option that is 2390 square-feet and has 3 beds/2 full/1 half baths. In addition a 1 car garage and 1 golf cart garage.



PRICE BUILDER



PLAN NAME	FOUNDATION	BEDS/ BATHS	SQ FT
THE CHALET \$449,999 BASE	SLAB	• 3 beds • 2 bath	1433
THE CHALET \$459,999 BASE	SLAB	• 4 beds • 2 bath	1518
COOPER COTTAGE \$639,999 BASE	SLAB	3 beds 3 baths OPTIONAL built in bunks OR 2 Flex 2 bath 1 Living	2126
COOPER COTTAGE \$689,999 BASE	BASEMENT	3 beds 2 OPTIONAL built in bunks OR 2 Flex 3bath 2 Living	2126
MAGNOLIA MANOR \$704,999 BASE	BASEMENT	• 3 beds • 2 bath • 2 half bath • 2 Living • 1 Outdoor Living • Gas Fireplace	2126
MAGNOLIA MANOR \$714,999-BASE	BASEMENT	• 4 beds • 3 bath • 1 half bath • 2 Living • Gas Fireplace	2126
MAGNOLIA MANOR \$664,999 BASE	SLAB	• 4 beds • 3 bath • 1 half bath • 1 Living • Gas Fireplace	2126
ADDISON COTTAGE \$744,999 BASE	BASEMENT	• 3 beds • 2 bath • 1 half bath • 2 Living • Gas Fireplace	2264
ADDISON COTTAGE \$754,999 BASE	BASEMENT	• 4 beds • 2 bath • 1 half bath • 2 Living • Gas Fireplace	2264
HEMINGWAY HOUSE \$764,999 BASE	BASEMENT	• 3 beds • 2 bath • 2 half bath. • 2 Living • Gas Fireplace	2324
HEMINGWAY HOUSE \$774,999 BASE	BASEMENT	• 4 beds • 3bath • 1 half bath • 2 Living • Gas Fireplace	2324
KASSIE COTTAGE \$734,999 BASE	SLAB	• 3 bed • 2bath • 1 half bath • 2 Living • 1 Car Garage • 1 Golf Cart Garage • Gas Fireplace	2390
KASSIE COTTAGE \$834,999 BASE	BASEMENT	• 4 beds • 3 bath • 2 half bath 1 flex, 1 storage, rooms • 2 Living • Gas Fireplace	2726

All floor plans, square-footage, bed & bath counts, future pool and site plan are for advertisement only - to be verified.



IN THE MARKET



JOSEPH CARTER

E: JOSEPH@JOSEPHCARTERREALTY.COM

P: 205.717.5253



MACY HINDS

E: MACYHINDS@JOSEPHCARTERREALTY.COM

P: 205.612.9838

Joseph Carter Realty was established in 2016 and has consistently been a top producing company on Lewis Smith Lake.

